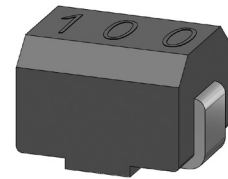


Electrical / Environmental

BHCL 322522

1210 Industry Size Surface Mount Inductors

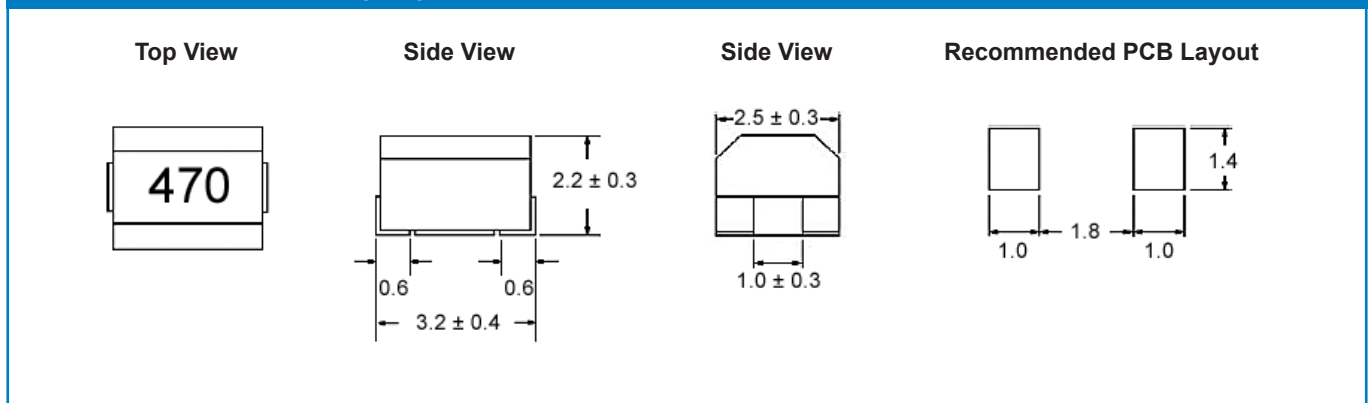
- Operating Temperature Range -40°C to +125°C
- Ambient Temperature, Maximum 100°C
- Resistance to Solder Heat 260°C for 10 sec.



Specifications @ 25°C / Packaging

Part Number	Inductance		Test Frequency MHz	SRF MHz Min.	DC Resistance Ω Max.	Rated Current mA Max.	7" Reel Qty (Units)
	μH	Q Min.					
BHCL322522-1R0MLF	1.0	10	7.960	100	0.156	770	2000
BHCL322522-1R5MLF	1.5	10	7.960	80	0.195	580	2000
BHCL322522-2R2MLF	2.2	10	7.960	65	0.260	480	2000
BHCL322522-3R3MLF	3.3	10	7.960	55	0.325	400	2000
BHCL322522-4R7MLF	4.7	10	7.960	45	0.520	320	2000
BHCL322522-6R8MLF	6.8	10	7.960	35	0.650	280	2000
BHCL322522-100KLF	10.0	15	2.520	28	1.105	220	2000
BHCL322522-150KLF	15.0	15	2.520	25	1.690	180	2000
BHCL322522-220KLF	22.0	15	2.520	20	2.600	145	2000
BHCL322522-330KLF	33.0	15	2.520	15	3.640	115	2000
BHCL322522-470KLF	47.0	20	2.520	13	5.460	105	2000
BHCL322522-680KLF	68.0	20	2.520	10	8.450	85	2000
BHCL322522-820KLF	82.0	20	2.520	9	8.710	80	2000
BHCL322522-101KLF	100.0	20	0.796	8	10.140	75	2000

Outline Dimensions (mm)



Ordering Information

